



# 2021 Annual Report

The Swiss Benevolent Society of New York (SBS) is the most significant Swiss charitable organization in the New York, New Jersey and Connecticut tri-state area.

We are a registered public 501(c)(3) not-for-profit and non-religious organization and we've helped individuals, families and our Swiss community achieve positive change for over 175 years.

We help people of all ages live more active, independent, safer, healthier and happier lives through social service programs. We assist students and their families with scholarship programs and organize regular social events for our members.

## Mission Statement

The objectives of the Swiss Benevolent Society of New York are charitable, and focus on offering pecuniary and other relief to qualified persons, including but not limited to natives of Switzerland or of Swiss origin, who are in the United States and in need of assistance. (Restated Certificate of Incorporation, 1971)

## Board Of Directors & Committees

### Board of Directors

Ambassador Markus Boerlin, Honorary President  
Johanna Reinhart, President (as of 6/1/21)  
Markus Bruderer, President (until 5/31/21)  
Ruedi Greiner, Vice President (as of 6/21/21)  
Alexandre-C. Manz, Secretary  
Alberto Zonca, Treasurer  
Peggy Gubelmann  
Richard Daetwiler  
Lorenz Lobsiger  
Andreas Maerki  
Marianne Mazzonelli  
Valerie Wolfman

### Executive Committee

Johanna Reinhart, *Chairperson (as of 6/1/21)*  
Markus Bruderer, *Chairperson (until 5/31/21)*  
Ruedi Greiner, *Vice President (as of 6/21/21)*  
Alexandre-C. Manz  
Alberto Zonca

### Development & Membership Committee

Johanna Reinhart, *Chairperson*

### Fundraising Committee

Johanna Reinhart, *Chairperson (as of 6/1/21)*  
Markus Bruderer, *Chairperson (until 5/31/21)*

### Investment Committee

Lorenz Lobsiger, *Chairperson*  
Andreas Maerki

### Scholarship Committee

Ruedi Greiner, *Chairperson*  
Peggy Gubelmann  
Dolf Herger  
Andre Hurni  
Hans Kaeser

### Social Service Committee

Valerie Wolfman, *Chairperson*  
Joan Dietrich  
Marianne Mazzonelli  
Mary Jo Motyka, LMSW  
Elise Feuerstein Karras, LMSW

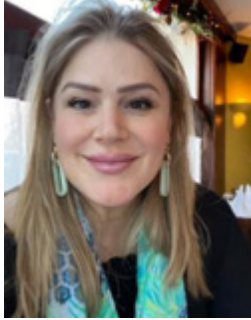
## Staff Members

Markus Bruderer, *Executive Director (as of 6/1/21)*  
Christine Hubacher, *Executive Director (until 1/24/21)*  
Elise Feuerstein Karras, LMSW  
Mary Jo Motyka, LMSW  
Sandra Ineichen, *Administrative Assistant*  
Sandra Phillips, *Executive Assistant*

## Independent Auditors

Tait Weller & Baker  
Two Liberty Place  
50 South 16th Street, Suite 2900  
Philadelphia, PA 19102-2529

## President's Report



Dear Members and Friends of the Swiss Benevolent Society of New York:

As we reflect on the past years, it is clear the COVID-19 pandemic has had a profound impact on our organization. Despite the unprecedented and continued challenges we faced, 2021 will be remembered by the Swiss Benevolent Society of New York for how the character of our organization was revealed through the actions of our board members, our staff, and our many volunteers, all of who exhibited remarkable determination in fulfilling the SBS' mission.

Our Social Workers increased our outreach efforts and online activities throughout the year. We implemented a number of new programs and initiatives to ensure that our members and clients remained safe and supported. As lockdown restrictions were lifted, we continued to focus on the well-being of our members and clients by holding multiple smaller, regional outings and events to build a sense of normalcy and renewed community. These events were well-received and attended leading up to our regional Christmas Luncheons.

The SBS continued to provide much needed assistance to students through our scholarships. In 2021, we awarded an astounding \$239,000 to 63 students during a time of great need. This is detailed in our report from the Scholarship Committee.

Our membership outreach and fundraising efforts continued throughout 2021. In December, we resumed our Swiss Hockey Night fundraiser, and we worked diligently to develop new fundraising and membership strategies.

2021 also brought a change of key staff. Our former Executive Director, Christine Hubacher, resigned from her position after serving as our Executive Director for over a decade. We are grateful for her service and dedication. After an arduous months-long search and interviews to fill the position, the Board of Directors unanimously selected Markus Bruderer from our top candidates as our new Executive Director. His former leadership experience with the SBS has already shown to be a great asset in these times of change and challenges, and since starting in his new role in June of 2021, we have already seen how his collaborative leadership style, commitment to accountability and to our community are impacting the daily operations and interactions at the SBS.

Thanks to the hard work and dedication of our Board of Directors, staff and volunteers, we were able to continue our many programs that positively impact so many lives. These achievements would not have been possible without the unwavering support of our members whose generosity and commitment to our organization have been truly inspiring. Thank you.

As we move forward into 2022 and beyond, I am confident that we will continue to build on this momentum. We have learned a great deal over the past year and a half, and I believe that we are better equipped than ever before to face whatever challenges lie ahead.

Thank you for your continued support of the Swiss Benevolent Society of New York. Together, we can make a real difference in the lives of all of our members, and especially those who need it most.

A handwritten signature in blue ink, which appears to read "Johanna". The signature is fluid and cursive, with a large loop at the end.

Johanna Reinhart, President

## 176<sup>th</sup> Annual Report

The 2021 Annual Meeting of the SBS was, of necessity, postponed due to restrictions imposed by the COVID pandemic. Although traditionally held in April, health and safety regulations did not allow for an in-person meeting this year. These are the 2021 reports by the Committee Chairs:

### Social Service Committee

Valerie Wolfman, Chair

In 2021, we were dealing with the overall consequences of COVID, which, although diminishing, was still present in its ability to affect the physical, psychological, and emotional aspects of daily life. As we were approaching a time of post-COVID, we became aware of the drastic changes that had occurred in the lives of our clients, members, and of course, ourselves. Previously capable and even robust seniors had lost much of their mobility and became afraid to travel, to see friends, to accept home visits, and even to venture outside. Although at the outset of the “opening up”, we started to think about resuming home visits or visits on the outside (in parks or outside cafes), it was not at all clear that this was the right choice. As we brainstormed with each other and our Executive Director and the staff, we discussed the safety issues, including the wearing of masks and distancing, if possible. Some people rejected the visits for quite some time, others accepted them gladly. We became aware, through several experiences, that the old era had gone, only to be replaced by something very different.

As a result of our observations, we decided that several different responses were needed, or at least to be tried out. We initiated the regional gatherings that took place in the neighborhoods of our members. Instead of hosting one Kaffeeklatsch in a central place in NYC (the Cucina restaurant), we searched for places that would be easy to get to and where one could meet friends in their area. We found cafes and small restaurants in Queens, on Long Island, in New Jersey, on the Upper West Side, on the Upper East Side and in Westchester. At first, we met only in outdoor spaces, and those who felt comfortable would join us. We built the attendance slowly and it grew throughout the year. People were able to easily access the venues and meet with old friends and eventually began to make new friends.

We found new ways to be creative and to innovate new programs. Since some people did not have access to technology (much to their disadvantage), an exercise class was formed exclusively on the telephone to access those who might have been left behind. It grew to such an extent that a second session was added. Also, instead of hosting movie

afternoons and music matinees in the office space, we experimented with using the Zoom format.

For the most part, this was successful, although many people really missed the in-person experience. Any outside trips that were suggested did not meet with much favorable response.

At the holidays, we delivered the blankets made by members of the Knitting club to the Pelham Parkway Nursing Home and then traveled to Long Island to deliver them to the Sun Harbor Nursing Home where one of our members resides.

Throughout the year, as we attempted to begin anew, we were very careful not to ignore or forget about our members, and worked to make sure that we didn't let them down with any lack of contact or inclusion in our Society. In large part, we assured everyone that the Swiss Benevolent Society would go on and we would all stay together through these challenging times.

Respectfully submitted,  
Elise Karras and Mary Jo Motyka



## Scholarship Committee

Ruedi Greiner, Chair

For the scholastic year 2021/22 we have continued working remotely and the annual scholarship committee meeting took place again via a multi-hour zoom call.

Before sharing with you the information on the grants awarded, I would like to provide you with information on the various types of scholarships available. You might find this information helpful when talking with family members and friends who have children preparing for college.

### SBS Merit Scholarship

The SBS Merit Scholarship, formerly known as the “Pellegrini Scholarship”, is a partial tuition grant, which is based on merit alone (cumulative Grade Point Average (at least 3.0). It is awarded to full-time students (12 or more semester credits) at the post-secondary school level for vocational or undergraduate and graduate academic studies at a school, accredited by the U.S. Department of Education. SBS Merit Scholarships do not renew automatically but may be applied for each year.

SBS Merit Scholarships are paid directly to the recipients’ schools in two installments, one at the beginning of the fall semester, the second one at the start of the spring semester, upon proof of enrollment by the school.

### SBS Outstanding Scholastic Achievement (OSA) Award

This award may be granted to a college senior or graduate student who demonstrates sustained academic excellence (cumulative Grade Point Average at least 3.8) in a demanding study program at a school accredited by the U.S. Department of Education. The student must be enrolled as a full-time student with 12 or more semester credits. It is a one-time only award. The amount is paid in two installments to the recipient’s school at the start of the fall and spring semesters upon proof of enrollment by the school.

### SBS Graduate Award

SBS Graduate Awards, formerly known as “Zimmermann Scholarship”, will be given to the graduate students with the highest cumulative Grade Point Average (3.8 minimum) enrolled at a school accredited by the U.S. Department of Education. The award is paid directly in two installments to the schools at the beginning of the fall and spring semesters upon proof of enrollment by the school.

### Medicus Student Exchange Scholarship

This program provides partial financial support for U.S. residents at the junior, senior or graduate college level who have been accepted to study at a Swiss university or Federal Institute of Technology. The full amount of these grants is paid upon proof of registration. This is a one-time only award.

Swiss students who wish to study in the United States may apply for this grant by contacting swissuniversities, Effingerstrasse 15, Postfach, 3000 Bern, Switzerland.

Here is the breakdown of the different grants that the scholarship committee created during our meetings as well as some additional details:

Awards	Number	USD
SBS Merit Scholarship	58	191,000
SBS Graduate Award	1	10,000
SBS OSA Award	1	8,000
Medicus	3	30,000
<b>Total</b>	<b>63</b>	<b>239,000</b>
Not qualified	2	

The management and handling of the application process were in the trusted hands of Executive Assistant Sandra Phillips and Administrative Assistant Sandra Ineichen.

On behalf of the Scholarship Committee, I would like to extend a big “Thank You” to them as the process of getting everything ready for the scholarship meeting takes a lot of effort and time. I am also very appreciative of all the hours my fellow committee members have put in preparing for our meeting.

The Swiss Benevolent Society of Philadelphia under the stewardship of their President Dolf Herger and the Maurice Rohrbach Fund led by Luciano Mueller support our scholarships financially and Dolf is also a member of the committee. We are very grateful for their continued support.

I also would like to thank you, the members of the SBS, for your continued support of our organization. Please let me know if you have any comments or suggestions.



## Development & Membership Committee

Johanna Reinhart, Chair

Over the past years we have been fortunate to receive donations and contributions from members, matching programs as well as organizations and corporate donors. Below are the audited numbers for 2021 with 2020 as comparison.

	2021	2020
Donations/Contributions	\$118,029.00	\$86,746.00
Legacies	\$50,000.00	\$165,207.00
New Life Memberships	3	2

The number of Life Memberships increased from 139 to 144 during this time.

We are always extremely grateful for legacies. They enable us to continue our programs and services at no cost to our members. If you are interested in making a bequest or contribution, please contact our Executive Director for details.

We thank our generous contributors, AmazonSmile Foundation, The Bahnik Foundation, Corinthian International Foundation, The Maurice Rohrbach Fund, Swiss Benevolent Society of Philadelphia, Swiss Re Foundation, Ustinet Corporation and Fox Hills Farm LLC for their continued support of our programs and events.



## Investment Committee

Lorenz Lobsiger, Chair

2021 was a challenging but positive year for global markets. Uncertainty surrounding the pandemic continued to spark market volatility, especially in the first quarter. Despite intermittent market choppiness, the global economy continued to recover throughout the year. Yet, COVID-19 had a negative impact on the global supply chain by impeding companies' abilities to manufacture and ship materials and products. In the US, speculation regarding the US Treasury's budget as well as higher inflation rates impacted consumer and business confidence.

In line with the highly volatile markets our investment portfolio performed as follows:

+ 10.62% in 2021

Below are the end-of the year market values of our investment portfolio and the respective asset class breakdown for the past two calendar years:

	2020		2021	
Equities	4,452,755	46%	4,822,944	48%
Fixed Income	3,000,917	31%	2,887,083	29%
Alternative Investments	1,892,118	19%	1,925,109	19%
Cash & Cash Equivalents	364,883	4%	387,617	4%
<b>Total</b>	<b>9,710,673</b>		<b>10,022,753</b>	

Withdrawals from the investment portfolio totaled \$650,000 in 2021. There were no deposits during 2021.

Looking ahead, financial markets are expected to remain volatile and stay focused on incoming economic data and the Federal Reserve.

To conclude, I am pleased to confirm that the Investment Committee holds periodic due diligence and review meetings via Zoom with our investment advisor, Wells Fargo Private Bank, which is managing our portfolio on a discretionary basis and acting in a fiduciary capacity. Our "Growth and Income" portfolio strategy and "Moderate" risk profile is aligned with SBS's long-term investment goals, risk tolerance and specific needs.

The portfolio remains well diversified and all investment activities are in compliance with the Statement of Investment Policy approved by the Board of Directors.

## Treasurer's Report

Alberto Zonca, Treasurer

### Fiscal Year 2021

#### Statement of Activities

Our financial results for 2021 were driven by a solid performance of the investment portfolio, resulting in a net return of \$962,090, net of investment and bank fees. Therefore, the SBS reports a \$292,546 increase of Net Assets, which were \$10.16 million as of December 31, 2021.

The separate report of the Investment Committee provides more information about the performance of the investment portfolio.

Donations decreased from \$251,953 (2020) to \$168,029 (2021), due to fewer legacies.

Total expenses increased from \$780,432 in 2020 to \$864,216 in 2021, largely due to a increase in scholarship payments that were deferred from 2020. The other expenses showing some increases (rent, telephone, information technology, travel and entertainment) as well as decreases (salaries, insurance, postage, printing, miscellaneous) and were largely in line with prior years and within the budget approved by the Board of Directors.

#### Statement of Financial Position

The assets include bank accounts, investments and the rent deposit.

The majority of liabilities is represented by awarded scholarships which have not yet been disbursed.

Net assets increased by \$292,546 as noted above, to \$10,162,270.

Our auditors, Tait Weller provided an unqualified opinion, confirming that our financial statements present fairly the financial position of our organization. The audit report is available upon request.











Swiss 13  
heritage  
night 17





## Our Finances

### Five-year Review

The table below shows our financial highlights over the most recent five years.

SELECTED FINANCIAL DATA					
	2017	2018	2019	2020	2021
Net Assets	9,357,170	8,293,786	9,344,403	9,869,724	10,162,270
Investment Portfolio	8,265,111	7,297,391	9,180,785	9,710,758	10,022,754
Restricted Assets	2,595,602	2,440,406	2,888,543	3,186,878	3,472,580
Revenues	2,982,989	(141,488)	1,972,221	1,305,753	1,156,762
Investment Income	913,435	(334,971)	1,434,392	979,993	962,090
Donations/Contributions	2,055,131	170,993	514,266	251,953	168,029
Scholarships Awards	217,475	210,630	211,173	112,500	225,500
Expenses	660,107	711,266	708,107	667,932	864,216

**Net Assets** are assets (mainly the investment portfolio), less accounts payable, which are scholarships awarded, but not yet paid. Net assets increased by \$805,100 over the past five years (from 12/31/2016 to 12/31/2021).

**Restricted assets** are limited by their utilization to specific purpose, and are related to the Dr. Medicus Scholarship Fund, which can only be used for specific scholarship awards.

**Revenues** are largely dependent on the performance of the investment portfolio. Over the five-year period, total revenues were \$7.28 million, including \$3.95 million investment income and \$3.16 million in donations. These include \$0.80 million by Dr. Medicus and \$1.16 million of real estate.

**Scholarship awards** were \$977,278.

**Expenses**, which exclude scholarships, for the last five years were \$3.61 million, of which the largest items were payroll and office rent.

→ **The cumulative result over these five years is the \$805,100 increase in Net Assets.**

We have been fortunate to receive generous donations from benefactors which, combined with the investment income, have been sufficient to fund our operations. The Board of Directors continues to find new ways to increase our revenues and, at the same time, expand our services, whenever feasible and affordable.



## Financial Report

### Statement of Activities

Year Ended December 31, 2021 (with 2020 summary)

	Without Donor Restrictions	With Donor Restrictions	Total	
			2021	2020
<b>Revenues, Gains and Other Support</b>				
Contributions	118,029		118,029	86,746
In-kind contributions	0		0	0
Legacies	50,000		50,000	165,207
Investment income (loss)	646,388	315,702	962,090	979,993
Loss on sale of investment property	0		0	
Miscellaneous	26,643		26,643	73,807
Net assets released from restrictions	30,000	(30,000)	0	0
<b>Total revenues, gains and other support</b>	<b>871,060</b>	<b>285,702</b>	<b>1,156,762</b>	<b>1,305,753</b>
<b>Expenses</b>				
Program services				
Social services	283,408		283,408	312,611
Scholarships	307,339		307,339	187,100
<b>Total program services</b>	<b>590,747</b>		<b>590,747</b>	<b>499,711</b>
Total supporting services	273,469		273,469	280,721
<b>Total expenses</b>	<b>864,216</b>		<b>864,216</b>	<b>780,432</b>
<b>Change in Net Assets</b>	<b>6,844</b>	<b>285,702</b>	<b>292,546</b>	<b>525,321</b>
<b>Net Assets, Beginning of Year</b>	<b>6,682,846</b>	<b>3,186,878</b>	<b>9,869,724</b>	<b>9,344,403</b>
<b>Net Assets, End of Year</b>	<b>6,689,690</b>	<b>3,472,580</b>	<b>10,162,270</b>	<b>9,869,724</b>

### Statement of Functional Expenses

Year Ended December 31, 2021 (with 2020 summary)

	Program Services			Supporting Svcs	Total	
	Social Services	Scholarships	Total	MGT & General	2021	2020
Salaries and payroll taxes	174,744	46,547	221,291	128,604	349,895	371,154
Employee benefits	28,080	2,524	30,604	10,366	40,970	51,297
Scholarships	0	225,500	225,500	0	225,500	112,500
Assistance and client services	856	0	856	13,309	14,165	7,160
Rent	24,356	18,705	43,061	67,939	111,000	107,567
Supplies and equipment	6,206	1,588	7,794	4,339	12,133	14,074
Professional fees	26,818	6,755	33,573	20,477	54,050	50,641
Board expenses	0	0	0	0	0	106
Insurance	3,194	817	4,011	5,826	9,837	13,680
Telephone	6,751	1,354	8,105	3,455	11,560	17,435
Postage and messengers	746	191	937	522	1,459	2,207
Printing	0	0	0	1,151	1,151	6,469
Information technology	4,813	1,466	6,279	6,110	12,389	6,469
Travel and entertainment	3,178	0	3,178	5,951	9,129	6,380
Miscellaneous	3,666	1,892	5,558	5,420	10,978	13,282
<b>Total expenses</b>	<b>283,408</b>	<b>307,339</b>	<b>590,747</b>	<b>273,469</b>	<b>864,216</b>	<b>780,432</b>



## Ways To Contribute

**There are many ways to help support the Swiss Benevolent Society of New York.**

Make your donation online today, at: [sbsny.org/donate](https://sbsny.org/donate)

Make your donation by phone: +1 (212) 246-0655

### Monetary Donations

The most immediate way to give is through a cash donation – either by sending us a check or donating by credit card or PayPal via our website. Cash gifts are fully deductible to up to 50% of the donor's adjusted gross income. There are no membership forms to fill out. Your check will serve as your application. Each donor is a member of the Society for the calendar year in which the contribution is made and will be listed in the appropriate category in our annual report.

### Ask your employer about matching gifts

If your employer participates in a matching gift program, the value of your donation to the SBS will be multiplied. Please inform your employer of your gift to us. We will be happy to provide all necessary forms and information.

### Appreciated Securities

The Internal Revenue Service allows you to take a tax deduction on the full fair-market value of appreciated securities you donate to a charity. You must have held the securities for a minimum period of 12 months or longer. Even with a 20% tax rate, you can achieve significant tax savings because your donation is exempt from capital gains taxes. These gifts may be deductible for up to 30% of the donor's adjusted gross income.

### Real Estate

Real estate, in some cases, can be given outright, and the donor receives a charitable income tax deduction equal to the property's fair market value.

### Legacies

You may wish to bequeath a specific amount or a percentage of your estate to the "Swiss Benevolent Society of New York" in your Last Will and Testament, or name us as a beneficiary in your Living Trust. A legacy to the SBS may reduce your estate taxes without depleting current assets.

### Life Insurance

Many people own life insurance that they no longer need for its original purpose. When circumstances change, the owner can put a life insurance policy to other uses, including a donation, in part or full, to a charity. Thank you for considering the SBS.

### Charitable Trusts

Different types of trusts (e.g., charitable remainder trust, charitable lead trust) may be established that meet your current needs for either ongoing income or immediate tax deductions, and which will benefit the SBS over the long term. These trusts are administered by a fiduciary and are subject to strict regulation.

**Other ways to help:** **Volunteer** — Be an active part of the SBS and volunteer your time or skills. Volunteers are needed!  
**Fundraise** — Start a fundraising campaign to raise money and awareness for the SBS.



## Contributions and Donations

### Legacies

Estate of Anneliese Goetz

### Matching Gifts

Pitney Bowes  
UBS  
Verizon Foundation

### Corporate and Organizational Contributions

AmazonSmile  
Maurice Rohrbach Fund  
Swiss Benevolent Society of Philadelphia  
Swiss Re Foundation  
The Bahnik Foundation, Inc.  
USTINET Corporation

### Corporate In-Kind Donations

Fox Hills Farm Chester Llc  
Marianne Mazzonelli

### Individual Member Contributions

#### Life Members

*One-time Gift Of \$1,500 Or More*

Charles E. & Fabienne Abrecht  
Margaret Aliesch  
Dominic & Maria Altamuro  
Reto Badrutt  
Micheline Becker Fluegel  
Annelies Belanger  
Josef Boeni  
Yvette Bonnevaux  
Peter & Dolores Bosshard  
Markus & Daisy Bruderer  
Rudolf Brühlmann  
Thomas & Rosemarie Buehler-Schiller  
Eileen Caulfield Schwab  
Stuart Coleman  
Martha Cox  
Samuel & Erna Daniel Weber  
Ursula Davis  
Gonzague de Luze  
Samuel Dietschi  
Balz & Elisabeth Eggimann  
Hans Egloff  
Suzanne Egloff  
Helene Eiber  
Gillian Fischer  
Dorothea Flink

Hans & Barbara Frei  
Nina Froriep  
Linda Geiser  
Annemarie Gilman  
Howard & Jane Goodman  
Natalie Greiner  
Ruedi & Stephanie Greiner  
Shauna Grob  
Werner Gubelin  
Peggy Gubelmann  
Daniel Hagmann  
Daniel & Ida Hauser  
Dieter & Verena Hoeppli  
John & Christine Hubacher  
Josef & Gemma Huber  
Andre Hurni  
Heidi Hutter  
Peter Isler  
Kirsten Jordi  
Margrit Kaminsky  
Robert & Vreni Keller  
Rudolf Keller  
Eduard & Rayanne Kleiner  
Urs & Heidi Kopp  
Hans-Rudolf & Annemarie Kuechler  
Charlotte Kugler  
Ernst & Ruth Kuhn  
Tanya Kuoni  
Andreas Kuster  
Jean-Pierre & Rachel Lehmann  
Georgette Magron  
Janine Maltas  
Alexandre & Christine Manz  
Stephan & Carolina Marti  
Marianne Mazzonelli  
Berta McCarthy  
Leila Meyer  
Marion Meyer  
Carl Minnig  
Carlos Minnig  
Harry Moesch  
Ernest & Anneliese Mueller  
Pablo Nuesch  
Annemarie Nussli  
Rosmari Oetiker  
Daniel Perregaux  
Phyllis Perret  
Elsbeth Reimann  
Johanna & Bettina Reinhart  
Lena Rigert  
Stephen Rigert  
Andre & Margrith Rohrer  
Sheila Rosenblum  
Doris Ruedin

Erwin L. Schaub  
Daniel & Brigitte Schaufelberger  
Marie-Louise Schlienger  
Guido & Elisabeth Schuler  
Ruth Schwab  
Carlo & Margaret Schweizer  
Michael & Esther Schweizer-Droller  
Urs Schwitter  
Ellen Simmons  
Darius & Nazanine Sorbi  
Rudolf & Carmen Stalder  
Richard Steiner  
Ken & Veronique Sturzenegger  
Fanny Turschwell  
Thomas & Judith Vivian  
Catherine Waterman  
Leonce Welt  
Michael & Michelle Werner  
Fred Witzig  
Michael & Valerie Wolfman  
Daniel & Suzanne Wuersch  
Karl Wyss  
Susanne Ziegler  
Marlies Zuber

### Patrons

*Donation Of \$1,000 Or More, From Life Members*

Thomas & Rosemarie Buehler-Schiller  
Ruedi & Stephanie Greiner  
Pablo Nuesch  
Michael & Michelle L. Werner

### Associate Patrons

*Additional Donations From Life Members*

Margaret Aliesch  
Markus & Daisy Bruderer  
Rudolf Brühlmann  
Martha Cox  
Shauna Grob  
Josef & Gemma Huber  
Andre Hurni  
Urs B. & Heidi Kopp  
Elsbeth Reimann  
Johanna & Bettina Reinhart  
Doris N. Ruedin  
Ellen S. Simmons  
Darius & Nazanine Sorbi  
Catherine Waterman  
Erna Weber-Daniel

### Diamond Level

*Donations Of \$651 To \$1499*

Marianne Clemett  
Betty J. Geiser  
Barbara Heider  
Helmut & Maria Lorenz  
Edward & Maya Manley

### Platinum Level

*Donations Of \$351 To \$650*

Michael & Margaret Benedetto  
Thomas Bosshard  
Helga Brush  
Yvonne Kress  
Lorenz Lobsiger  
Joshua & Michel Loth  
Michel Loth  
Dennis & Alida Wine

### Gold Level

*Donations Of 201 To \$350*

Lisa Albers  
Rudolf & Magda Bosshard  
Samuel & Eliane Cavin  
Ursula Clay  
Hans Egloff  
Ruedi & Sandra L. Frischknecht  
Trudi Gallagher  
Arno & Lily Geiger  
Peter & Marlis Germann  
Alain & Linda Golay  
Ernst & Hazel Jung  
Regina Klaatsch  
Irene Loreda  
Fredy & Lourdes Nyffeler  
Elizabeth & Michele Pfister  
Ruth Polnyj  
Jeanine Procassini  
Roland & Beatrice Puton  
Peter & Barbara Roggensinger  
Alex & Noelva Schibli-Vigoya  
Ursula Shapiro  
Roland Troller  
Steven Walsey  
Annemarie Wang  
Margaretha Wilson

**Silver Level**

*Donations Of \$101 To \$200*

Irene Badiali  
Doris Blendinger  
Marie Y. Bolliger  
Markus & Renee Buergler  
Werner & Joan Christinger  
Yolanda A. Cunningham  
Heidi Cunningham  
Hans Cunningham  
Adrian Egger  
Margrit Egli  
Vincent & Yvonne M. Ferruzza  
Theresia Gantenhammer  
Cyril Gsell  
Ernest Haering  
Dolf Herger  
Richard Hulme  
Paul & Yolanda Jordi  
Robert & Carol Keller  
Susan Keller  
Madeleine A. Laviano  
Giancarlo Malchiodi  
Katia Maneff  
Elsie Manolt  
Michael & Maureen Menakis  
Gertrude Merkle-Hunziker  
Francois Mermoud  
Othmar & Gertrud Metzler  
Luciano Mueller  
William Pedraitia  
Erika Peterson  
Marlyse Rand  
Vreni Ranjo  
Ana Maria Recouso  
Roland & Annette Rizzi  
George & Sonya Rubin  
Ruth Scherrer  
Heinrich Schlegel  
Helene Sinany-MacLeod  
Mitchell Spichiger  
Raymond & Christine Spring  
Gary & Enrica Staeger- Riley  
Ruth Stoll Kassanga  
Suresh & Uma Subramanian  
Susan Troost  
Angela Vulich  
Eva Wegmuller  
Lucy Witschi  
Peter & Bertha Wyss  
Christine Yost  
Erwin B. & Christian E.  
Zimmermann  
Alberto Zonca

**Bronze Level**

*Donations Of \$60 To \$100*

Ellen Acinapuro  
Bettina Aigner  
Monica Altamuro  
Frieda Alutin  
Juerg Bandle  
Rene & Susan Baumann  
Rolf & Verena Baumgartner  
Susanna Beltrandi  
Lisa Beratis  
Giorgina Bernasconi Fusi  
Ida Bigler  
Edith E. Bowman  
Rolf Bruderer  
Beryl Buehler  
Janet Buggle  
Andre C. Burgstaller  
Maria-Luisa Crivelli  
Diane Dee  
Stacy Dee  
Joan Dietrich  
Bruce Dumelin  
Stephanie Fäh  
Pearl Fisk  
Janet Frank  
Walter & Mary-Wo Giger  
Anneliese Goetz  
Andrea R. Goldhagen  
Nicole Grauer  
Helena Gromosaik  
Madeleine Hartmann  
Jocelyne Hecker  
Susan Homberger  
Angela Hugenschmidt  
Jürg Hunziker  
Ida Inderbitzin  
Franz Jungi  
Elvira Kellenberger  
Irene Kublun  
Rolf Kuhn  
Monique Kulling  
Claire P. Lang  
Urs & Paula Leuenberger  
Yvonne Lingg  
Elisabeth Martin  
Francois Mermoud  
Alda Minotti Saunders  
Rose-Anne Moore  
Margaret Morgenthaler  
John Oakes  
Daniele Pedrazzoli  
Marianne & Leeman Perkins  
Sonja Pfeiffer  
Sonja Pironti  
Irene Quiles

Bernard J.& Marcelle Reverdin  
Marghereta Ringger  
Suzanne Rohr  
Kitty Ruderman  
Silver Ruth  
Rita Sadowski  
Irving Salzman  
Rene M. & Marcela Schaub  
Nelly Schmidt  
Dina Schneider  
Madeleine Selick  
Deanna Siff-Haller  
Erika Smeraldi  
Caspar Spescha  
Alex & Dora Studer  
Gisela Szurgot  
Madeleine Truninger  
Mariette Uldry  
Dieter Wachter  
Giuseppe & Bernarda Weber  
Albert Widmer  
Margrit Wilhelm  
Martin B. & Yolanda Witschi Poa  
Yolanda Wolf  
Hansruedi Wuergler  
Susanne Ziegler  
Maria Maya Zimmermann



Commemorative Donations

*In Memory of*

*Deceased Name In Bold*

**Maria A. Badiali**

Irene Badiali

**Frieda Binz-Schoch**

Ruth Silver

**Heinz Bosshard**

Thomas Bosshard

**Paul Buggle**

Janet Buggle

**Howard Cunningham**

Yolanda A. Cunningham

**Howard Cunningham**

Heidi Cunningham

**Howard Cunningham**

Hans Cunningham

**Paul Dessibourg**

Ursula Clay

**Doreen Ward, Lina Buehler,  
Yvonne Burger, Karl Wolf,  
Verna Chung, Mae Curran**

Beryl Buehler

**Herla and Stephen Fisk,  
Holocaust Survivors**

Pearl Fisk

**Margaret Gasser**

Madeleine A. Laviano

**Anneliese Goetz and  
Olga Walde**

Erna Weber-Daniel

**Pierre Grauer**

Nicole Grauer

**Peter Jung**

Ernst & Hazel Jung

**William Laederach**

Josef & Gemma Huber

**Amalia Malchiodi Cadieli**

Giancarlo Malchiodi

**William Danforth Merkle**

Gertrude Merkle-Hunziker

**Henry W. Pfister**

Elizabeth & Michele Pfister

**Gotthard Rubin**

George & Sonya Rubin

**James M. Ruedin**

Doris N. Ruedin

**Ed Scherrer**

Ruth Scherrer

*In Gratitude of*

*Honoree Name In Bold*

**Elise Karras**

Susan Keller

**Elise Karras and**

**Mary Jo Motyka**

Elsbeth Reimann

**Elise and Mary Jo**

Annemarie Wang

**Marie and Joseph Hunziker-  
Portmann**

Gertrude Merkle-Hunziker

*In Appreciation of*

*Honoree Name In Bold*

**Elise Karras**

Ernest Haering

*In Honor of*

*Honoree Name In Bold*

**Hugo Stalder and Elise Karras**

Steven Walsey



The Swiss Benevolent Society of New York  
500 Fifth Avenue, Suite 1800  
New York, NY 10110

[www.sbsny.org](http://www.sbsny.org)

E. [info@sbsny.org](mailto:info@sbsny.org)  
T. 212.246.0655

